

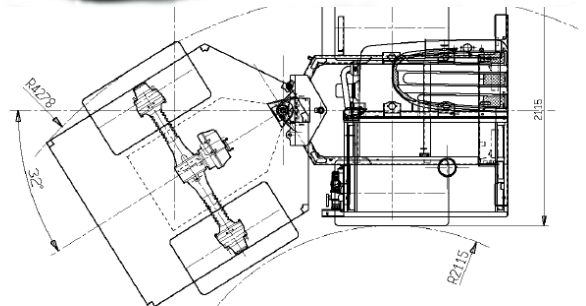
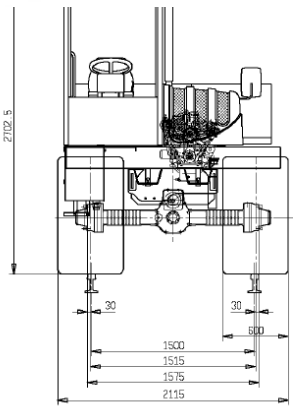
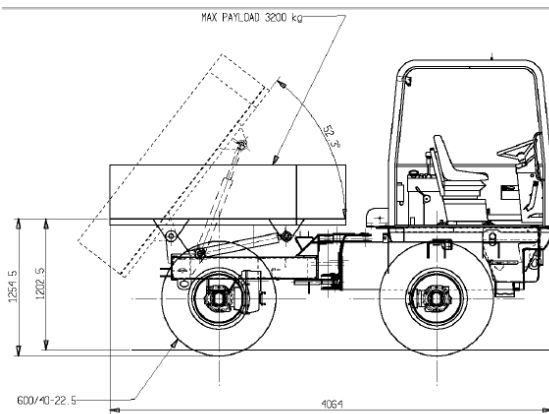


DUMPER D40JSR

Max Payload 4.0 t

Diesel Engine 36kW (48CV)

Rear Tip with side & rear gates



Front skip hydraulic dumping, with rear and side open able boards

Max payload 4000 kg

Yanmar 4TNV88 diesel engine; max power 36 kW (48HP) at 3000 rpm

Nominal power 32.6 kW (44.3HP) at 2600 rpm, 97/68 CE directive; EPA-Regulation

Water-cooling, direct injection

2-speed "automotive" hydrostatic transmission and 2-speed mechanical gearbox

4-wheels drive; max speed 20 km/h, Hydraulic power-steering

Rigid axles with planetary reductions at the wheels hub

Articulated chassis with heavy-duty rod type central articulation

Oil immersed, self-adjusting internal disc brakes acting on all wheels

600/40-22.5 12PR in TR12 configuration tyres, front and rear with 20 x 22.2 rim

Operator's protection cabin with ROPS ISO 3471 -FOPS Lvl II ISO 3449

Pivoting (180°) driving post; adjustable seat with safety belt

Dimensions: Length 4064 mm, Width 2115 mm, Height 2702 mm

Machine conforms to 98/37/CE directive; Noise conforms to 2000/14/CE directive

Protection Guard of the Gear Box

Optional with hi-Rail (Rail Corp - within a restricted work site – 15kph max, Add 4 week's delivery)

24 hours Conditional Rego Ready

Optional spare tyre & rim



Sydney (Head Office) Thornton Queanbeyan
02 9833 6000 02 4954 7066 02 6297 2755