

FULL HYDRAULIC COMPACT EXCAVATOR

# TB108

Machine Weight:855kg

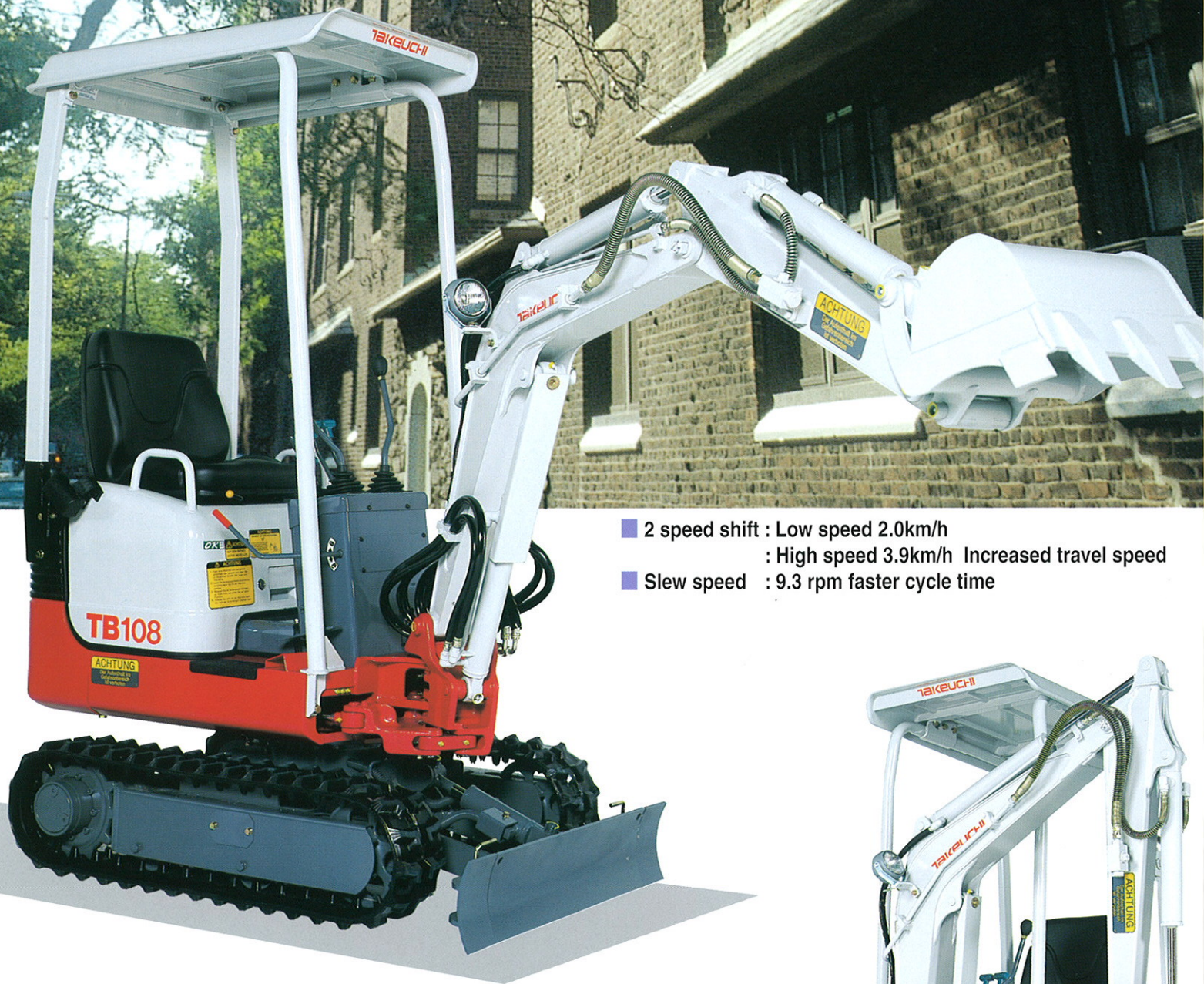


**TAKEUCHI**



# TAKEUCHI ... Leading the Way in Compact Excavators

The new model TB108 compact excavator is the product of years of customer input, research, field-testing, and product refinement. Designed and engineered from the "ground up" with the latest compact equipment technology, the TB108 firmly establishes the new standard for compact excavator performance, reliability, and ease of operation.



- 2 speed shift : Low speed 2.0km/h  
: High speed 3.9km/h Increased travel speed
- Slew speed : 9.3 rpm faster cycle time

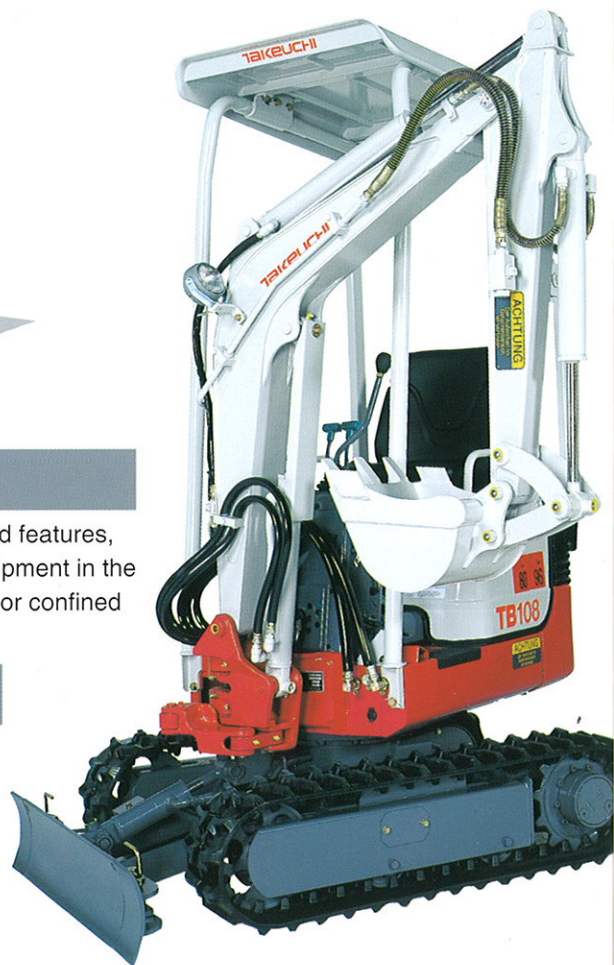


## Ease of operation

■ The new TB108 excavators retain the standard features, which have proven so popular on TAKEUCHI equipment in the past. All of which are designed in a compact size for confined area operation.

## Safety

■ Safety lock out levers disable travel and operating controls during entry and exit from the excavator. Safety lock out pin disables swing for safety.





## Operator Comfort



■ **Adjustable one-piece PVC seat** provides a comfortable "custom fit" for each operator, minimizing operator fatigue. One-piece PVC resists wear and tear on a tough jobsite.

■ **Optimum ground leveling work** precision-machined control valve block provides fine metering of oil flow for smooth control of excavator.

■ **Water-cooled 2 cylinder engine** 6.8 kW at 2400RPM: powerful output! quiet operation.

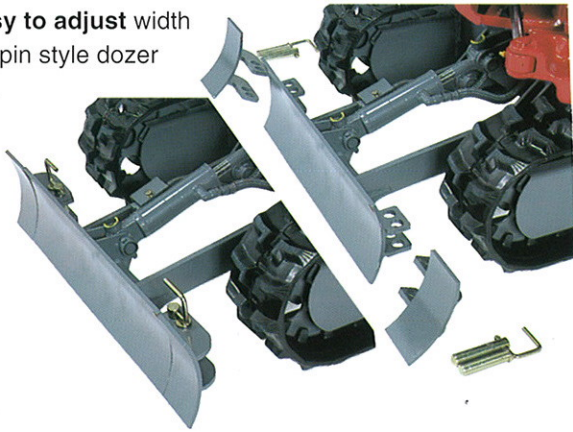
■ **Tilt back engine cover** provides easy access to engine and hydraulics.

■ **Hybrid hydraulic oil** filter extends the interval for filter change.



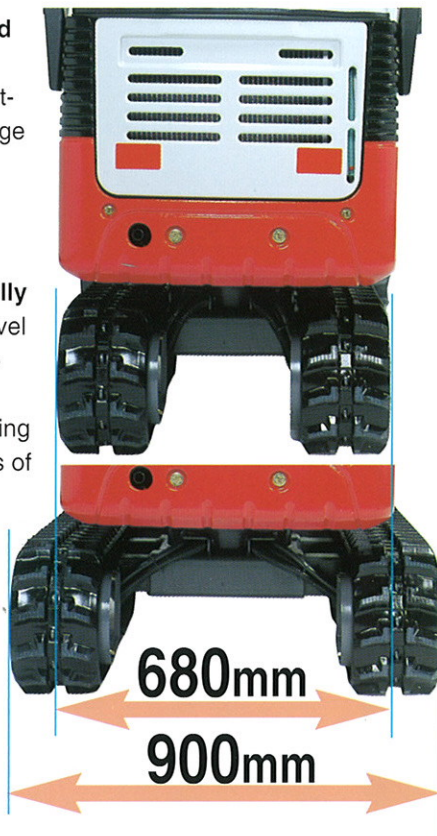
## Serviceability

■ **Easy to adjust** width of the pin style dozer blade.

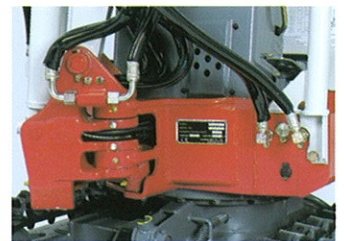


■ **A cast iron wrap around protective counterweight** protects the engine compartment from accidental damage when working in confined areas.

■ **Track frame hydraulically adjusts** from 680mm to travel through narrow openings to 900mm to provide greater operating stability. Combining the advantages of two sizes of excavators in a single machine.

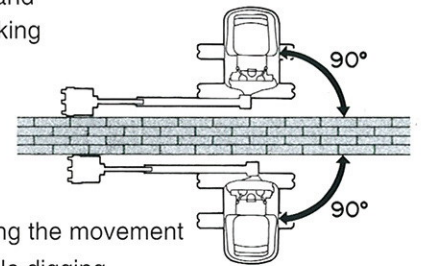


■ **Protective routing of the boom bracket** virtually eliminates hose abrasion from narrow trench walls and excavation debris and allows clear vision when working with an attachment.



■ **One and 2-way auxiliary hydraulic circuit**, plumbed to the dipper arm, powers a wide range of attachments.

■ **Independent boom swing - 90 degrees** to the left and right – minimizing the movement of the excavator while digging.



## Options

■ **TKB51 HYDRAULIC BREAKER** is perfectly matched to the hydraulic flow, pressure and operating capacity of the TAKEUCHI compact excavator, providing maximum performance during concrete breaking and demolition work. Operating oil pressure range: 100-120kg/cm<sup>2</sup> Oil flow required: 16-30 l/min Impact blows per minutes: 1250-2150bpm



■ **OPTIONAL TRAVEL ALARM** is available as an added safety precaution to alert anyone in the excavators work area of machine travel.

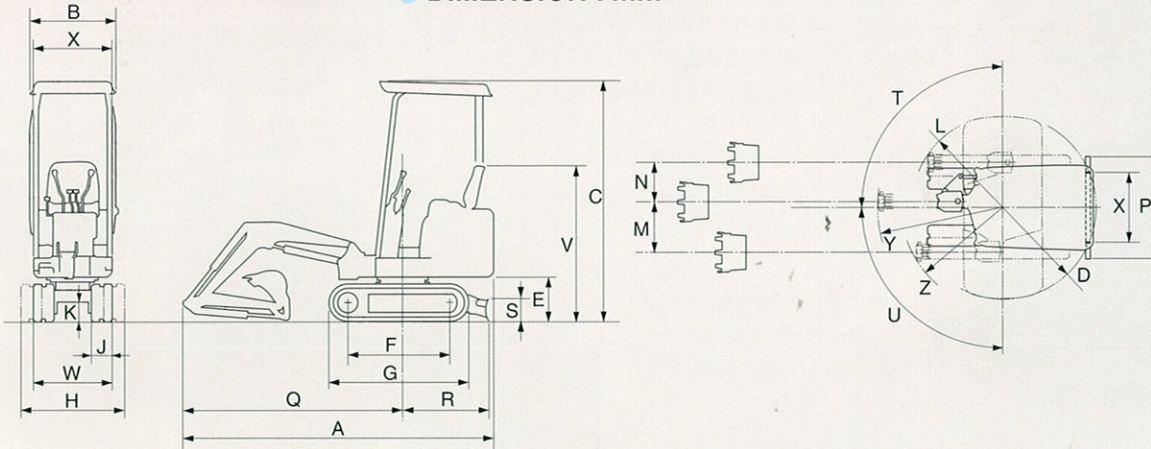
■ **LONG STICK ARM** provides longer digging reach when needed.

■ **DUAL AIR CLENER ELEMENT** offers longer replacement interval and increased engine protection.



# TB108

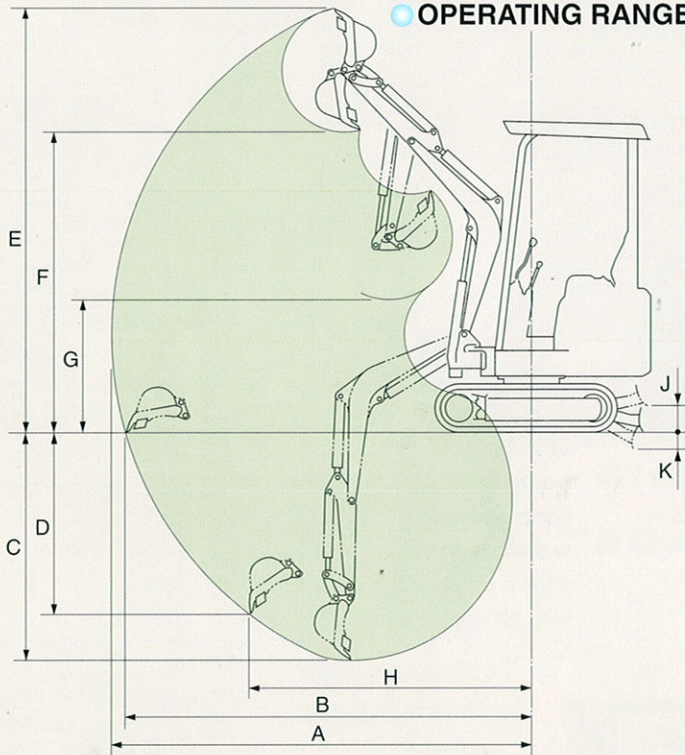
## ● DIMENSION : mm



A	2710
B	740
C	2110 / 2195
D	800
E	385
F	900
G	1220
H	900
J	180
K	160
L	790
M	440
N	340
P	900
Q	1920
R	740
S	200
T	90°
U	90°
V	1375
W	680
X	680
Y	1080
Z	880

Units:mm

## ● OPERATING RANGE : mm



	Item	Standard Arm	Long Arm
A	Max.digging radius	2825	2970
B	Max.floor digging radius	2730	2880
C	Max.digging depth	1530	1680
D	Max.vertical digging depth	1220	1370
E	Max.digging height	2860	2975
F	Max.dumping height	2030	2145
G	Min.dumping height	900	760
H	Max.vertical digging radius	1890	1915
J	Max.raising height	155	←
K	Max.lowering depth	120	←

Units:mm

## SPECIFICATIONS TB108 (Canopy, Rubber Tracked, Breaker Pippings Standard, Fops /Tops Canopy, Standard Arm)

<b>WEIGHT</b>		Rear slew radius		800	<b>OPERATING RANGE : mm</b>	
Machine weight	kg	855	Min. ground clearance	160	Max. dig. depth	1530
<b>BUCKET</b>		<b>PERFORMANCE</b>		Max. vertical dig depth		
Bucket capa.	m <sup>3</sup>	0.013 (Struck) / 0.018 (Heaped)	Traction speed	km/h	2.0 / 3.9	Max. dump height
Bucket width	mm	350	Upper slew speed	min <sup>-1</sup>	9.3	Max. dig height
<b>DIESEL ENGINE (Water-cooled)</b>		Gradeability		deg / %	25° / 47%	Max. dig radius
Model	2TNV70		Max dig power bucket	kN	10.2	Max. floor dig. radius
Type	2CYL. 4CYCL		Max dig power arm	kN	6.6	Min. slew radius
Rated output	kW	7.1 / 2,400min <sup>-1</sup>	Ground press	kPa	25.1	Max. bucket offset RH/LH
Max. torque	N m	33	<b>DOZER BLADE : mm</b>		<b>HYDRAULIC SYSTEM</b>	
Displacement	mL	569	Width x Height	680 x 200		Pump type
Cool water capa.	L	2.8	Operating range up/down	155 x 120		Pump pressure
Lub. oil capa	L	1.7	<b>OFF-SET DIG FUNCTION</b>		MPa	
Fuel tank capa	L	9.4	Type	Boom Swing		Hydraulic motor type
<b>OVERALL DIMENSION : mm</b>		Swing angle RH / LH		90° / 90°		Hydraulic oil discharge
Length (in transport)	2710		<b>TRACTION SYSTEM : mm</b>		L/min	
Width	740		Crawler type	Rubber Track		Auxiliary flow
Height	2110		Crawler shoe width	180		L/min
						Hydraulic oil filter type
						Hydraulic tank capa
						L



WORLD CREATOR OF COMPACT EXCAVATOR

## TAKEUCHI MFG.CO.,LTD.

205,Uwadaira,Sakaki-machi,Hanisina-gun,  
Nagano 389-0605,Japan  
Phone (81)268-81-1112  
Telefax (81)268-81-1121  
E-mail:marketing@takeuchi-mfg.co.jp  
Murakami Factory  
Togura Factory  
Sakaki Factory

**Semco**<sup>®</sup>  
Equipment Sales

St Marys Ph: 02 9833-6000  
Queanbeyan Ph: 02 6297-2755  
Thornton Ph: 02 4954-7066  
www.semco-group.com.au